

Helpful links

Evelina Community Speech and Language Therapy

Website: www.evelinalondon.nhs.uk/communityspeechandlanguage

Facebook: www.facebook.com/EvelinaLondonSLT/

National Autistic Society

Website: www.nas.org

Local groups in Lambeth & Southwark: Contact Pamela Douglas, Branch Officer, NAS Southwark Branch, Tel: 07747 768536, Email: southwark@nas.org.uk

Contact a family (advice and support for parents of disabled children)

Website: <http://www.cafamily.org.uk/>

SENDirect (advice on services and activities for disabled children)

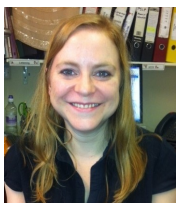
Website: <https://sendirect.org.uk/>

Family Lives (support with education including Education, Health and Care plans, behaviour, health development, parenting)

Website: <http://www.familylives.org.uk/>

Ambitious about Autism

Website: <https://www.ambitiousaboutautism.org.uk>



Gill Davies

Email: gillian.davies@gstt.nhs.uk
Telephone: 020 3049 6151



Alice Habul

Email: alice.habul@gstt.nhs.uk
Telephone: 020 3049 6077

Speech and Language Therapy at Haymerle School

(June 2017 Newsletter)

What have we been doing in the classes this Summer term ?

We had a joint workshop with the teaching staff before Easter to agree new communication targets for the Summer term.

We then spent the first half of the term running groups in the classes every two weeks. Following the half-term break we have been going in to each class every week, due to an increase in our time at school and feedback from teachers.

The groups have focussed on developing attention, requesting and interaction with peers. They have included motivating sensory activities such as lemonade volcano and tornado tube.

Some children, identified jointly by the class-teacher and us, have received one-to-one input to support specific communication needs. These children will change each term based on individual needs.

Finally, two training sessions for staff in the Attention Autism approach by Gina Davies were purchased by school. The first session took place on the 5th of June, with a follow-up session in the Autumn term. This is the approach we have based our attention groups on and we're excited for this to be rolled-out throughout the school—look out for further updates!





Makaton: Signs of the Term



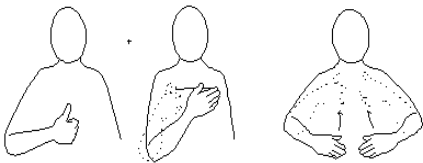
We have a 'Sign of the Week' every week at Haymerle. This is modelled to the class teachers then displayed throughout the school and put on the school website.

Each term we have a different theme. We try to ensure that the signs are helpful for the staff and meaningful for the students.

Theme for this half-term:

Signs to support Speech and Language Therapy groups

Week 1: Good morning, how are you today?



Week 2: I feel... happy / sad



Week 3: Next (can be used for turn-taking or for activities)



Week 4: Instructions—sit, help, more



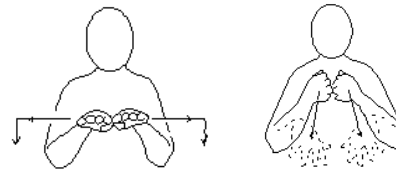
Week 5: Fast, slow



Week 6: Hot, cold



Week 7: Group table is finished



Please see the Communication section on the school website for bigger pictures and more information about our Sign of the Week:

<http://www.haymerle.southwark.sch.uk/information/communication/>

Please see The Makaton Charity website for more information about Makaton: <https://www.makaton.org/>

Parent Sessions

We ran a parent coffee morning at Haymerle on the 23rd of June, which 6 parents attended. During the coffee morning we:

- Provided additional information about 'Attention Autism'.
- Showed some of the turn-taking activities we've been carrying out in the classes.
- Modelled the Makaton signs of the week.
- Provided information about local training opportunities for parents (e.g. Makaton, PECS, visuals).
- Spoke to parents one-to-one about specific questions.

Our next coffee morning will be at Haymerle on the 17th of November from 9.30am—11.00am.

A letter will be sent nearer the time, but we would love to see you there!