



School starts at 9:20am  
**Bee on time!**

Dear Parents and Carers

It seems no time at all since we opened two new classes in September 2024 welcoming seventeen new pupils to the Haymerle School community. It has been wonderful to see how well the children have begun to settle into their new school routines. Thank you to staff, parents and carers for your support in making this possible.

I hope that parents and carers have felt welcomed during this term and have come along to our new starter reviews as well as planned induction training sessions and coffee mornings this term.

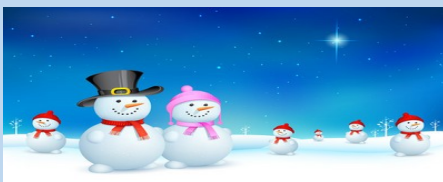
Introducing Core and Chat boards is a new venture for Haymerle School combining how we support the children with PECS and Makaton in delivering our Total Communication strategy for all pupils. Further training sessions for parents and carers will take place next term and we hope you will be able to come along. If you have questions or need support with communication at home please contact our Speech Therapy team through the school office.

Thank you for your generous donations to the charities we have supported this autumn term including **Save the Children** and **Children in Need**.

Welcome to Maria as School Business Manager, I hope that you have enjoyed the first full term with us. Sadly we must say goodbye to Diana Weaver from Violet Class who is leaving Haymerle to return home and be with family and friends. We wish you well in all your future endeavours.

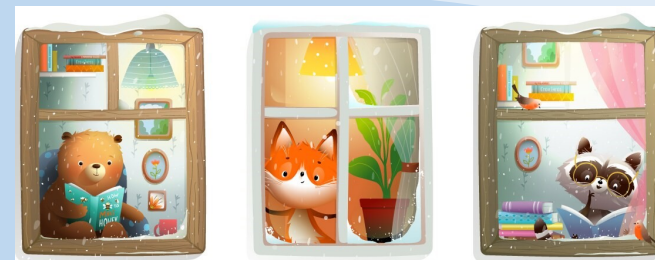
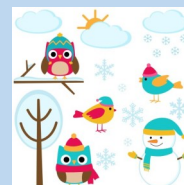
Thank you to our wonderful school staff and the Governors for their enthusiasm, commitment, hard work and dedication ensuring the best opportunities for all of our pupils. I hope you have a happy and restful break.

Finally on behalf of the pupils, staff and governors I would like to wish you and you families a very merry and peaceful Christmas Holiday. I hope that you can take some time to rest, relax and to enjoy the company of family and friends.



Wishing you a very Merry Christmas and looking forward to future successes in the New Year.

Liz Nolan



Thank you all for your generous donations



**Save the Children**

**£61.50**



The link below has lots of help, advice, support programmes, tips and resources that you may find helpful.

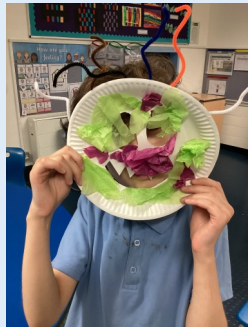
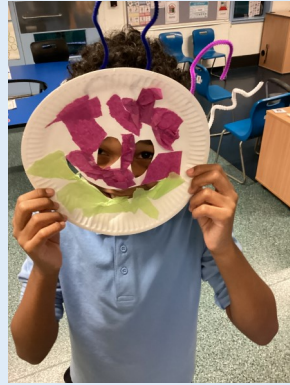
[Help with parenting | Southwark Council](#)

# What we have been doing



## Violet class

Our topic this term has been 'All Greek To Me'. We have created lots of fun art work such as Medusa masks, Greek vases, wreaths, the Parthenon building and lots more!! We have had such fun learning about the history of Greece, islands, the difference between the UK and Greece and what food people eat in both countries.



## Purple class

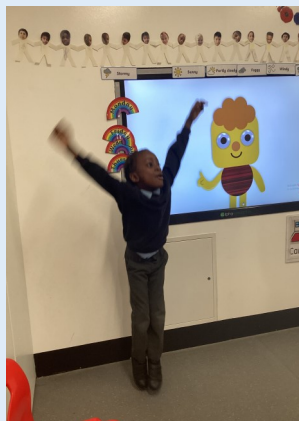
We have been working on improving confidence on the large apparatus in the gym and joining in with group yoga with increased independence. We enjoyed decorating gingerbread for Children in Need and linking numeracy to our shared story.



# What we have been doing

## Orange class

- Having fun in the sensory room
- Practicing our writing
- Enjoying copying dance moves
- Playing together during history freeflow.



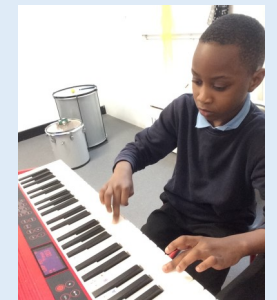
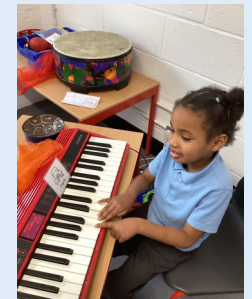
## MUSIC THERAPY AT HAYMERLE SCHOOL UPDATE

It has been a busy term in music therapy with the pupils engaging positively in musical interactions.

Music therapy offers pupils the opportunity to explore their emotions, to increase their confidence and to build a therapeutic relationship.

Remember that there are lots of resources for use at home on the Haymerle School website. It also includes more information about music therapy.

<https://haymerle.southwark.sch.uk/therapies/music-therapy/>



## Autumn Term in the Hub.

It has been a fun term in the Hub! As a new project for all of us at Haymerle School it has been a transitional period but things are really starting to take shape. With a focus on supporting learners who may find certain parts of their journey here challenging we have started to see how the provision can take shape and what it may look like for different learners.

We have had plans and interventions implemented which are making a big difference to certain learners and how they are working in class. With a focus on positivity, communication and high expectations I really feel as though we will truly start to see the best outcomes for all the learners we reach with our provision.

Not just individuals either we have been working on social skills groups, play skills, communication skills, all of which will enable our learners to have better outcomes across their schooling going forward.

We also ran our first Hub coffee morning earlier this term which was a great success and I look forward to running more in the new year! Thank you to all of those who came and provided feedback. We are grateful and we look forward to working together with you all moving forward to provide the best outcomes for everyone.



## TERM DATES 2024 - 2025

### Autumn Term

Monday 2 September 2024 to Friday 25 October 2024

**Half Term** – Monday 28 October 2024 to Friday 1 November 2024

Monday 4 November 2024 to Friday 20 December 2024

### Spring Term

Monday 6 January 2025 to Friday 14 February 2025

**Half Term** – Monday 17 February 2025 to Friday 21 February 2025

Monday 24 February 2025 to Friday 4 April 2025

### Summer Term

Tuesday 22 April 2025 to Friday 23 May 2025

(May Day bank holiday will be taken on 5 May)

**Half Term** – Monday 26 May 2025 to Friday 30 May 2025

Monday 2 June 2025 to Tuesday 22 July 2025

### Inset Days

Monday 2nd to Tuesday 3rd September 2024

Friday 25th October

**Monday 6th January 2025**

1 additional inset day to be confirmed



Enjoy the holidays. We return to school on TUESDAY 7th 2025

